



QUALTEK

FTTX SOLUTIONS

CATEGORIES

01 GPON SOLUTION EQUIPMENT

02 FIBER OPTIC CABLES

03 CABLE MANAGEMENT

04 ENCLOSURES

05 POLE HARDWARE

06 MICRODUCTS

GPON SOLUTION EQUIPMENT

QTK-OLT-1908 OLT RACK MOUNTED 8 PORTS

QUALTEK



1U rack-mounted device with 1 USB interface, 4 uplink GE ports, 4 uplink SFP ports, 2 10-gigabit uplink ports and 8 GPON ports. Each GPON port supports the splitting ratio of 1:128 and provides downstream bandwidth of 2.5Gbps and upstream bandwidth of 1.25Gbps. System supports 1024 GPON terminals.

- Supports OMCI remote management for ONT/ONU, compatible with ITU-T G.984.4/G.988 OMCI Protocol.

- Layer 2 switching configuration management: i.e. port management, VLAN, RSTP, IGMP, ACL, QOS.

- PON function configuration management: i.e. OLT authentication, DBA template, service template, line template among others.

- Layer 3 function: support static routing, dhcp-relay and vlanif configuration. dhcp-relay and vlanif configuration

QTK-OLT-1916 OLT RACK MOUNTED 16 PORTS

QUALTEK



1U rack-mounted device with 1 USB interface, 4 uplink GE ports, 4 uplink SFP ports, 2 10-gigabit uplink ports and 16 GPON ports. Each GPON port supports the splitting ratio of 1:128 and provides downstream bandwidth of 2.5Gbps and upstream bandwidth of 1.25Gbps. System supports 2048 GPON terminals.

- Supports OMCI remote management for ONT/ONU, compatible with ITU-T G.984.4/G.988 OMCI Protocol.

- Complete PON protection switching function.

- Layer 2 Switching Function, supports varieties of layer 2 functions, i.e. TRUNK, VLAN, rate limit, port isolate, queue technology, flow control technology, ACL, which provides technical guarantee for the development of multi-service functions.

- QOS Guarantee.

Supports data rate of typical 2.488 Gbps for GPON OLT application up to 20km transmission distance. SC receptacle for optical interface.



- SC BIDI SFP Single Mode Transceiver
- 1490nm Continuous Mode 2.488 Gbps DFB Transmitter
- 1310nm Burst Mode 1.244 Gbps APD-TIA Receiver
- Single +3.3 Power Supply, Hot-pluggable
- LVTTTL receiver Fast Burst Packet Detect indication
- Burst mode received signal strength indication (RSSI) function
- Complies with Telcordia (Bellcore) GR-468-CORE, SFP MSA, SFF-8472 and ITU-T G.984.2 Class B+ / C+

Supports data rate of typical 2.488 Gbps for GPON OLT application up to 20km transmission distance. SC receptacle for optical interface.



- SC BIDI SFP Single Mode Transceiver
- 1490nm Continuous Mode 2.488 Gbps DFB Transmitter
- 1310nm Burst Mode 1.244 Gbps APD-TIA Receiver
- Single +3.3 Power Supply, Hot-pluggable
- LVTTTL receiver Fast Burst Packet Detect indication
- Burst mode received signal strength indication (RSSI) function
- Complies with Telcordia (Bellcore) GR-468-CORE, SFP MSA, SFF-8472, and ITU-T G.984.2 Class C++

QTK-ONT-4GWDB-2AU-G 4ONT 4G + 2POTS + DUAL BAND

QUALTEK

Provides two POTS ports, four 10/100/1000M adaptive Ethernet ports, one USB port, and dual frequency Wi-Fi function. Plastic casing and external power supply adapter. Compatible with third party OLTs (Huawei/ZTE/Fiberhome/Alcatel-Lucent).

- compliant with ITU T G.984.1/2/3/4 standard
- Meet 802.11 a/b/g/n/ac WIFI technical standard support 2.4GHz and 5GHz
- Four external antennas, 5dBi antenna gain
- Support ONU auto-discovery/Link detection/remote upgrade of software
- Support OMCI+TR069 management mode
- Support multicast Snooping/Proxy
- Support DHCP/PPPOE/Static IP internet mode
- Support MAC-address filter and URL access control
- Support Dynamic Bandwidth Allocation (DBA)
- Support ACL configure data packet filter flexibly
- EMS network management based on SNMP



QTK-ONT-1GW-G ONT 1GE + WIFI XPON

QUALTEK

Integrates wireless function which meets 802.11 b/g/n technical standards. It has two external high gain omnidirectional antennas and a wireless transmission rate up to 300Mbps.

- Provides users with more efficient data transmission security.
- Complies with IEEE802.3ah and ITU – T G.984 standard.
- Support ONU auto-discovery/Link detection/remote upgrade of software.
- Support VLAN transparent, tag configuration.
- Support multicast function
- Support DHCP/Static/PPPOE internet mode
- Support port-binding
- Support OAM/OMCI+TR069 remote management





Three-in-one FTTH gateway for small and medium-sized businesses, SOHO office and home users, integrating XPON, WIFI, and CATV functions.

- Integrates OMCI, TR-069 remote configuration and maintenance, supports diagnosis monitoring and remote disabling of optical fiber.
- Supports Route mode for PPPoE/IPoE/Static IP and Bridge mode.
- Support 802.11n 300Mbps Wi-Fi (T / R) 7dBi function;
- Supports CATV remote control signal by OLT.
- WAN supports network bridging, routing and hybrid bridging /routing modes; 2048 MAC address capacity.
- Supports VLAN, transparent, tag, translation, trunk, etc.; port monitoring, port mirroring, port rate limitation, port SLA, etc.; IEEE802.1p QoS and four level priority queue; IPv4 / IPv6 IGMP snooping and MLD snooping.



2GE+1POTS+WIFI GPON/EPON HGU WiFi Mesh terminal devices are designed for fulfilling FTTH and

triple play service demand of fixed network operators. These boxes are based on the mature Chipset

(Realtek) technology, in accordance with IEEE802.11b/g/n/ac WiFi, Layer 2/3, Wi-Fi CERTIFIED™ EasyMesh, and high quality VoIP as well.

- Compliant with IEEE802.11b/g/n/ac 2.4GHz Operating frequency: 2.400-2.483GHz (WiFi 4) 5.0GHz Operating frequency: 5.150-5.825GHz (WiFi 5 wave 2)
- WiFi: 4*4 MIMO, 5dBi antenna, rate up to 1.167Gbps, Multiple SSID
- 1 G/EPON port (EPON PX20+ and GPON Class B+) Receiving sensitivity: ≤-28dBm
- Management mode: OAM/OMCI, Telnet, WEB, TR069



The Dual Band 802.11ac wireless router HG4720 delivers high performance wireless connectivity for Small Office and Home(SOHO) deployments.

- Supports dual band concurrent operation at 2.4GHz and 5GHz with combined throughput of 1.2Gbps(300Mbps at 2.4GHz and 867Mbps at 5GHz).
- Supports Wi-Fi EasyMesh that brings a standard-based approach to WiFi networks that utilizes multiple access points (APs), combining the benefits of easy to use, self-adapting Wi-Fi with greater flexibility

FIBER OPTIC CABLES

QTK-ADSS-SJ
ADSS SINGLE JACKET 4-144
CORES (100-400M SPAN)

QUALTEK

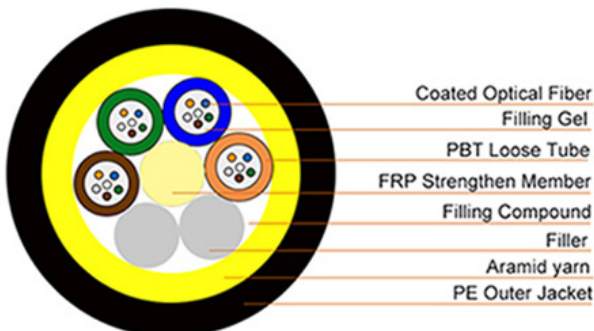


Fibers are positioned into a loose tube made of high modulus plastics. The tubes are filled with a water-resistant filling compound and fillers are stranded around a FRP (Fiber Reinforced Plastic) as a non-metallic central strength member into a compact and circular cable core.

- Fiber Type: G652D
- 4-144 CORES
- SPAN: 100M-400M
- Fiber Count: 6; 12; 24; 48; 96
- Attenuation: @1310 < 0.36 dB/Km y @1550 < 0.22 dB/Km

QTK -ADSS-DJ
ADSS DOUBLE JACKET 4 -144
CORES (100-400m SPAN)

QUALTEK



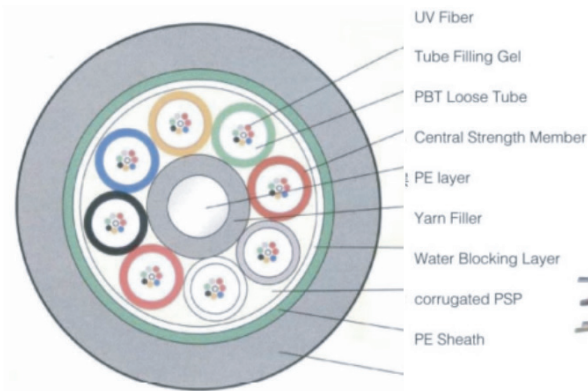
Fibers are positioned into a loose tube made of high modulus plastics. The tubes are filled with a water-resistant filling compound and fillers are stranded around a FRP (Fiber Reinforced Plastic) as a non-metallic central strength member into a compact and circular cable core.

- Fiber Type: G652D
- 4 -144 CORES
- SPAN: 100-400M
- Fiber Count: 6; 12; 24; 48; 96
- Attenuation: @1310 < 0.36 dB/Km y @1550 < 0.22 dB/Km



Core loose tube stranded structure type Optical fiber (Steel Tape Armor)

- Central Strength Member.
- SZ layer stranded fiber with special filling compound.
- Double APL adheres tightly with PE Sheath.
- Low dispersion and attenuation.
- PSP longitudinal wrapping structure is applied to provide better moisture proof performance, crush resistance performance and preventing rodent animal damage.



Core loose tube stranded structure type Optical fiber (Steel Tape Armor)

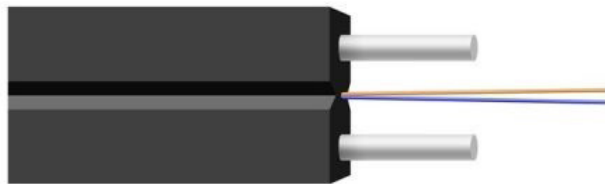
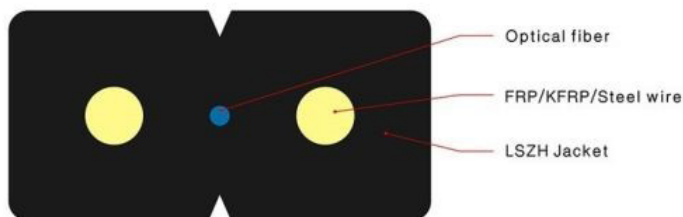
- Central Strength Member.
- SZ layer stranded fiber with special filling compound.
- Double APL adheres tightly with PE Sheath.
- Low dispersion and attenuation.
- PSP longitudinal wrapping structure is applied to provide better moisture proof performance, crush resistance performance and preventing rodent animal damage.

Cable Type: GJYXCH (GJYXFCH / GJYXCV / GJYXFCV)

- Strength Member: Metal Supporting Wire.
- Flame retardant sheath (PVC or LSZH).
- Optical Fiber: 1-4 cores.
- Small diameter, light weight and high tensile strength.
- Small diameter, light weight and high tensile strength.
- Operating Temperature: -40°C ~ 60°C

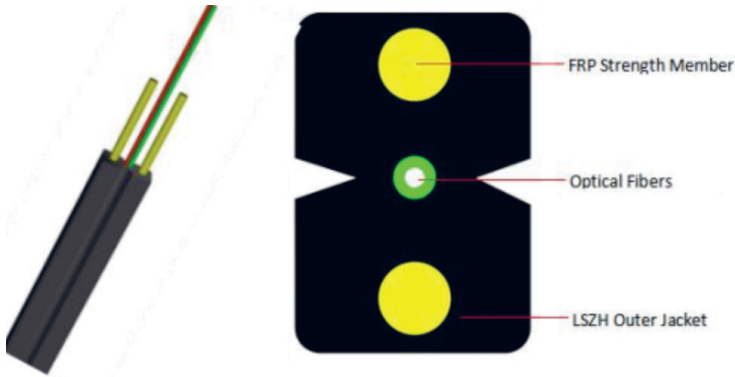


QTK-DROP CABLE- FIG8
DROP CABLE FIG 8



The Optical Fiber Unit is positioned in the centre. FRP are placed at the two sides to increase the strength of the Optical Cable itself . The cable is completed with a black or white colour LSZH outer jacket (IEC 60332-1-2)

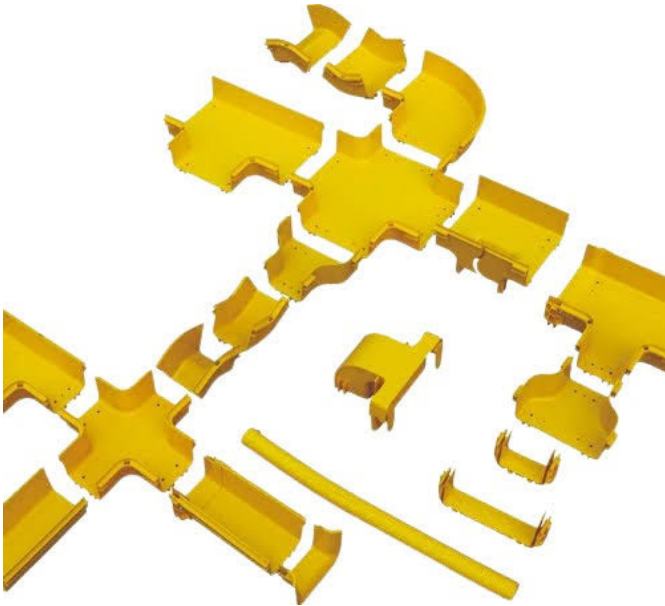
- Special low-bend-Sensitivity fiber provides high bandwidth and excellent communication transmission properties.
- Two parallel FRP strength members ensure good performance of crush resistance to protect the fibers.
- Simple structure, light weight and high practicability.
- Novel flute design, easily strip and splice, simplify installation and maintenance.



The Optical Fiber Unit is positioned in the centre. FRP are placed at the two sides to increase the strength of the Optical Cable itself. The cable is completed with a black or white colour LSZH outer jacket (IEC 60332-1-2)

- Special low-bend-Sensitivity fiber provided high bandwidth and excellent communication transmission property.
- Two parallel FRP strength members ensure good performance of crush resistance to protect the fibers.
- Simple structure, light weight and high practicability.
- Novel flute design, easily strip and splice, simplify the installation and maintenance.
- Agregar características de low friction!!!

CABLE MANAGEMENT

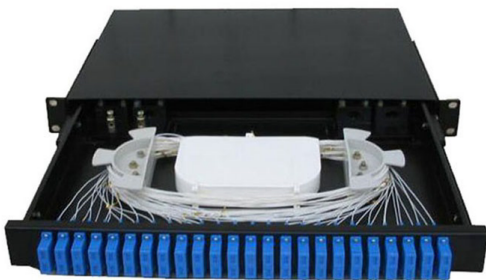


System designed to protect and route fiber optical patchcords, able assemblies form network cabinet, ODF and other devices.

- Ideal solution for optical raceway requirements.
- Easy maintenance.
- Flame-retardant materials rated GB/T2048-2008 FV-0.

Materials:

- Straight sections: PVC
- Other plastic parts: ABS



Rack-mounted 19" with sliding drawer design, integrated with splice cassette and cable management elements.

- Manages large quantities of fiber with high density design
- Fiber bend radius more than 40mm
- Suitable for the splice of ribbon and bunchy cables.
- Maximum capacity up to 96 ports
- Efficient space for cable management
- Cable led out from left or right side of patch panel rear part
- In compliance with Telcordia GR1209/1221.

QTK-ODF P2S ODF P2 SERIES

QUALTEK



Standard 19" fixed bolt installation rack-mounted design, integrated with splice cassette and cable management elements.

- Fiber bend radius control more than 40mm
- Suitable for the splice of ribbon and bunchy cables
- Maximum capacity up to 144 ports
- Cable led out from left or right side of patch panel rear part
- In compliance with Telcordia GR1209/1221.

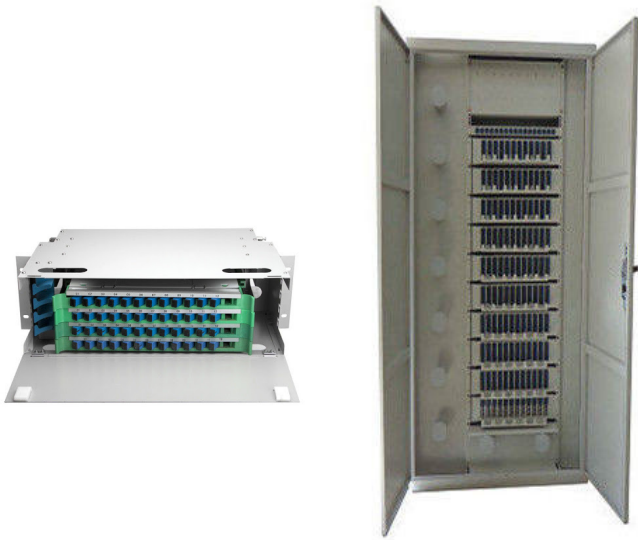
QTK-ODF P3S ODF P3 SERIES

QUALTEK



Rack-mounted 19" with sliding drawer and front flip panel design, integrated with splice cassette and cable management elements.

- Manages large quantities of fiber with high density design.
- Fiber bend radius control more than 40mm.
- Suitable for the splice of ribbon and bunchy cables.
- Maximum capacity up to 72 ports
Adaptor type: SC,FC,ST,Duplex SC,Duplex LC.
- Cable led out from left or right side of patch panel rear part.
- In compliance with Telcordia GR1209/1221.



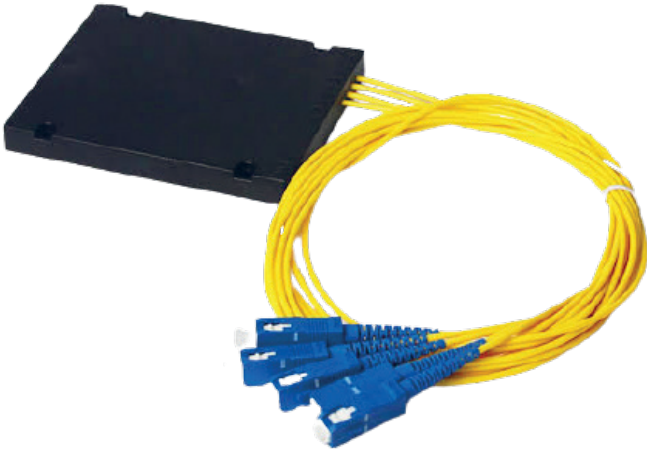
Rack-mounted 19" with sliding drawer and front flip panel design integrated with splice cassette and cable management elements.

- Fiber bend radius control more than 40mm
- Suitable for the splice of ribbon and bunchy cables
- Maximum capacity up to 720 ports
- Efficient space for cable management
- Cable led out from left or right side of patch panel rear part.
- In compliance with Telcordia GR1209/1221 qualifications.



Rack-mounted 19" with swing out design Integrated with splice cassette and cable management elements.

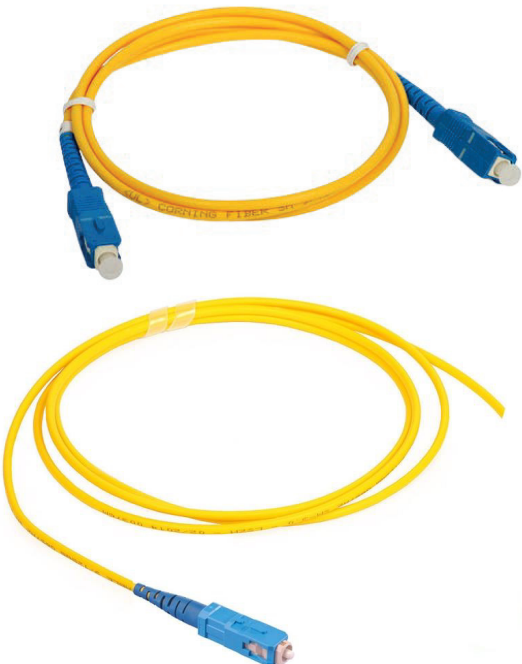
- Fiber bend radius control more than 40mm
- Suitable for the splice of ribbon and bunchy cables
- Maximum capacity up to 48 ports
- Body material: Cold rolled steel or stainless steel
- Cable led out from left or right side of patch panel rear part
- In compliance with Telcordia GR1209/1221 qualifications.



Steel tube type, ABS cassette type, mini cassette type PLC splitters.

- Compact design.
- Low insertion loss and low PDL.
- High reliability.
- High channel counts.
- Wide wavelength range.
- Large operating and temperature range.
- Customized packaging and configuration.
- Complies with Telcordia GR1209/1221 qualifications.

QTK- PATCH / PIGTAIL
FIBER PATCH CORD & PIGTAIL



Single fiber cable or duplex fiber cable.

- Connector Type: SC FC ST LC MU E2000 DIN MPO.
- Polishing Type: UPC or APC.
- Fiber Type: SM or MM (50/125um or 65.5/125um).
- Cable Jacket: LSZH or PVC.
- Cable Diameter: 0.9mm; 1.4mm; 1.6mm; 2.0mm; 3.0mm.
- Strengthen Member: Kevlar
- Fiber Insertion Loss (dB): <0.2
- Connector Insertion Loss (dB): <0.3

Connector Return Loss (dB): UPC (>55dB); APC (>60dB).

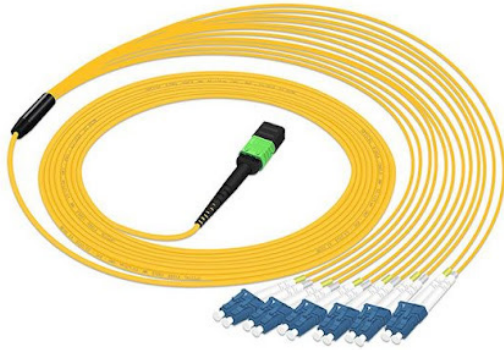
Repeatability (500 times) (dB): <0.2

Bending Radius (mm): >30

Tensile Strength (Kg/100mm): >12

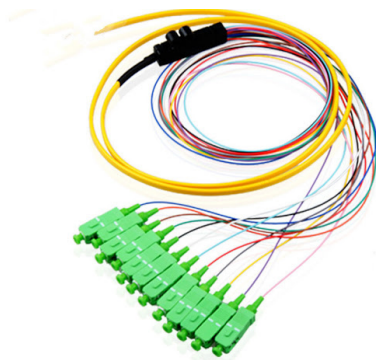
Working Temperature: -40°C ~ +80°C

Complies with Telcordia GR1209/1221



Designed to wrap several single cores pigtails into one jacket to make the cabling more compact and suitable for ODN projects.

- Compact design.
- Connector Type SC FC ST LC MU E2000 DIN MPO.
- Polishing Type UPC or APC.
- Fiber Type SM or MM (50/125um or 65.5/125um).
- Low insertion loss and low PDL.
- High channel counts.
- Wide wavelength range.
- Large operating and temperature range - 40°C~80°C
- Customized packaging and configuration.
- Full Telcordia GR1209/1221 qualifications.

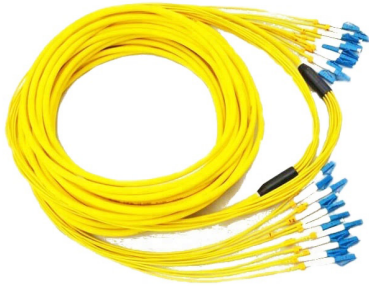


Designed to glue several single cores pigtails into one ribbon jacket to achieve the high density cabling for ODN projects.

- Compact design.
- Connector Type SC FC ST LC MU E2000 DIN MPO.
- Polishing Type UPC or APC.
- Fiber Type SM or MM (50/125um or 65.5/125um).
- Fiber Count Type 4,6,8,12.
- Outer Cable Jacket Yellow for SM fiber, Orange for MM fiber
Cable Jacket LSZH or PVC, 2.0mm diameter.
- Low insertion loss and low PDL.
- Wide wavelength range.
- Large operating and temperature range -40°C ~ 80°C.
- Customized packaging and configuration.
- Full Telcordia GR1209/1221 qualifications.

QTK-BREAKOUT FIBER BREAKOUT CABLE

QUALTEK



Designed to wrap several single cores pigtails into one jacket to make the cabling more compact and suitable for ODN projects.

- Compact design.
- Connector Type SC FC ST LC MU E2000 DIN MPO.
- Polishing Type UPC or APC.
- Fiber Type SM or MM (50/125um or 65.5/125um).
- Fiber Count Type 4,6,8,12.
- Outer Cable Jacket Yellow for SM fiber, Orange for MM fiber.
- Cable Jacket LSZH or PVC,2.0mm diameter.
- Low insertion loss and low PDL.
- Wide wavelength range.
- Large operating and temperature range -40°~+80 °C.
- Customized packaging and configuration.
- Full Telcordia GR1209/1221 qualifications.

QTK-MPO FIBER MPO PATCHCORD & PIGTAILS

QUALTEK



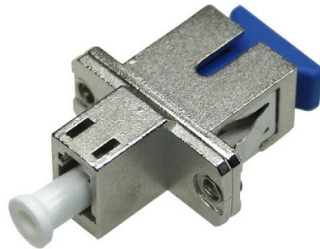
High density solution for telecom central office and data center

- FC,SC,ST,LC connectors available.
- Compact design.
- Low insertion loss and low PDL.
- High reliability.
- High channel counts.
- Wide wavelength range.
- Large operating and temperature range.
- Customized packaging and configuration.
- Complies with ITU-T Standard.

BARE FIBER ADAPTOR
FC UPC, SINGLE MODE



HYBRID ADAPTOR
SC & LC UPC



HYBRID ADAPTOR
FC & LC UPC

High reliability with zirconia internal tube. Large operating and temperature range.

- Connector Type: FC SC LC ST DIN E2000 MU MTRJ.
- Polishing Mode: UPC or APC.
- Insertion Loss: <0.2dB.
- Interchangeability: <0.2dB.
- Durability: >1000 x.
- Repeatability: <0.1dB.
- Working Temperature: -40°~+80°C.
- Working Humidity: <90% RH.
- Full Telcordia GR1209/1221.

SC UPC FIXED, 1 - 15DB



FC & FC VARIABLE, 1 30DB



FC UPC FIXED, 1 - 15DB

Plug and play design o protect equipment from being overpowered.

- Connector Type: FC SC LC ST DIN E2000 MU MTRJ.
- Polishing Mode: UPC or APC.
- Attenuation Tolerance: 0.5dB.
- Fiber Type: Single Mode.
- Return Loss: >55dB.
- Wavelength: 1310nm, 1490nm, 1550nm.
- Working Temperature: -40°~+80°C.
- Working Humidity: <90% RH.
- Full Telcordia GR1209/1221.

QTK-FIELD CONNECTOR FIELD ASSEMBLY FIBER CONNECTOR

QUALTEK



Suitable for FTTx butterfly type drop cable.

- Low insertion loss (including optical adapter).
- Screw design, easy to open and close.
- Preset fiber and matching-fluid design minimizes optical loss.
- Easy to use and reusable 10 times.
- Connection Type: Preset fiber with matching fluid.
- Connector Type: SC or LC.
- Suitable Fiber Type: SM9/ 125um AND MM.
- Applicable Cable: 250-900um; 2.0mm; 2.0x3.0mm; 3.0mm.
- Fiber Coating Diameter: 250um.
- Insertion loss (dB): <0.5 (including adaptor).
- Return Loss (dB): UPC: >40dB. APC: >45dB.

QTK-BSY-100 PRE-CONNECTORIZED DROP CABLE

QUALTEK



Cost effective solution for in house termination

- Low insertion loss and added loss.
- IP 67 water, dust proof and corrosion resistant.
- Mechanical performance: IEC 61754-4 standard.
- Material in the Jumper cable are all-weather resistant and UV-resistant.
- ROHS and REACH material compliant.

ENCLOSURES

QTK-DJS SERIES VERTICAL TYPE JUNCTION BOX (BOTTLE / DOME)

QUALTEK



Used in aerial hanging and wall-mounting applications, for the straight-through and branching splice of the fiber cable.

- Shell material: ABS.
- Entry ports sealed by heat-shrinkable tube.
- Closures can be reopened and reused without changing the sealing material.
- Core capacity:
 - Bunchy type splitters: 48F / 96F / 144F / 288F
 - Ribbon type splitters: 72F / 288F / 360F / 432F

QTK-FOB-128 HORIZONTAL TYPE JUNCTION BOX-128

QUALTEK



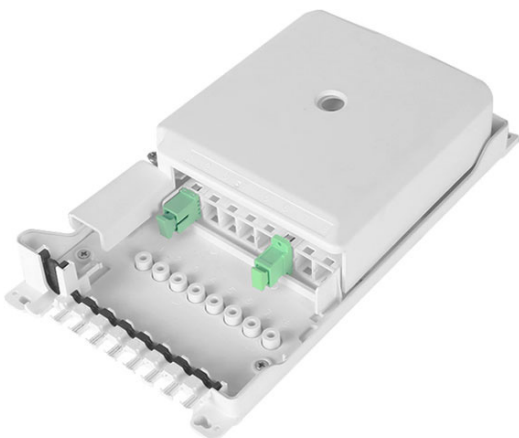
Its design allows the mechanical continuity of the cable pulling elements and protects fibers, junctions, and optical devices facilitating the organization of splices and fiber surplus storage.

- Suitable for outdoor and indoor installation, i.e. manhole, walls, poles, or cable galleries.
- The closing cover is completely assembled and removed without the need for special tools thanks to the clip-type seal.
- Rubber gaskets entries seal the cable access to the box.
- Diameter inputs/outputs cables: 14.3 mm to 19 mm.
- Maximum 128 fusions of F.O (double layer).
- Wide and easily accessible rectangular splice trays with extendable tabs for better fiber storage up to 16 F.O. (double layer).



Design allows mechanical continuity of the cable pulling elements and protects fibers, junctions, and optical devices facilitating the organization of splices and fiber surplus storage. Suitable for outdoor and indoor installation.

- It has 4 independent cable accesses at one end. Each of them allows two medium-capacity optical cables (double inputs) and up to 6 small capacity optical cables (7mm) input.
- The closing cover is completely assembled and removed without the need of special tools thanks to the clip-type seal.
- Rubber gaskets entries seal the cable access to the box.
- Diameter inputs/outputs cables: 7mm to 22mm.
- Maximum 256 fusions of F.O (double layer).
- Wide and easily accessible rectangular splice trays with extendable tabs for better fiber storage up to 32 F.O.(double layer).
- Support block and individual trays allow 90° turn and are locked in fixed positions to facilitate installation.

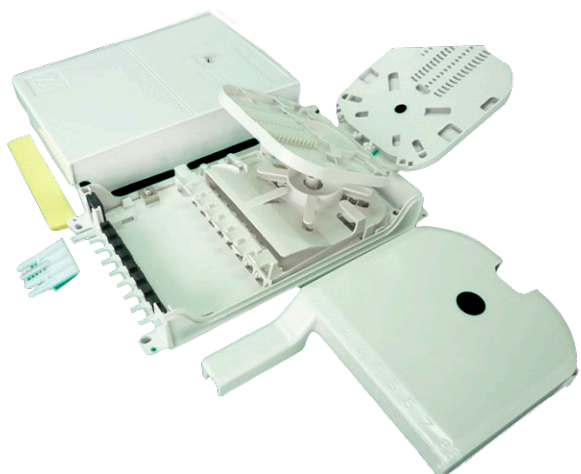


Holds up to 8 subscribers and it is used as a termination point for the feeder cable to connect with drop cable in FTTx network system. It integrates fiber splicing, splitting, distribution, storage and cable connection in one solid protection box.

- IP-66 protection level.
- Integrated with splice cassette and cable management rods.
- Easy maintenance and access to extend the capacity.
- Fiber bend radius: more than 40 mm.
- Suitable for the fusion splice or mechanical splice.
- Optional: 1*8 Splitter.
- Efficient cable management.
- 8 ports drop cable entry capacity.

QTK-FAT-8H ACCESS TERMINAL BOX 8 CORES- INDOOR

QUALTEK



Can hold up to 8 subscribers. It is used as a termination point for the feeder cable to connect with drop cable in FTTx network system. It integrates fiber splicing, splitting, distribution, storage and cable connection in one solid protection box.

- IP-54 protection level.
- Integrated with splice cassette and cable management rods.
- Easy maintenance and access to extend the capacity.
- Fiber bend radius: more than 40 mm.
- Suitable for the fusion splice or mechanical splice.
- Optional: 1*8 Splitter.
- Efficient cable management.
- 8 ports drop cable entry capacity.

QTK-FAT-8K ACCESS TERMINAL BOX 8 CORES- INDOOR

QUALTEK



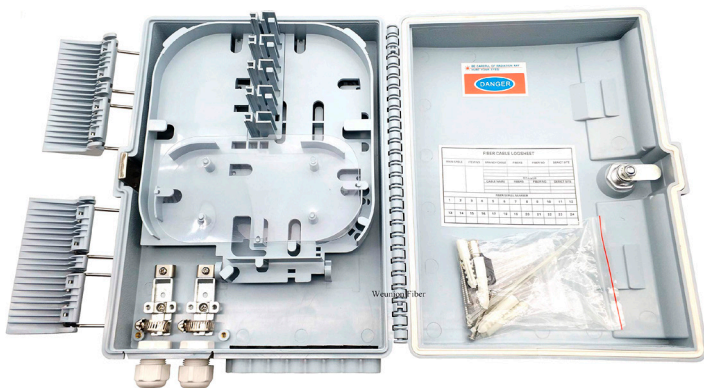
Can hold up to 8 subscribers. It is used as a termination point for the feeder cable to connect with drop cable in FTTx network system. It integrates fiber splicing, splitting, distribution, storage and cable connection in one solid protection box.

- IP-54 protection level.
- Integrated with splice cassette and cable management rods.
- Easy maintenance and access to extend the capacity.
- Fiber bend radius: more than 40 mm.
- Suitable for the fusion splice or mechanical splice.
- Optional: 1*8 Splitter.
- Efficient cable management.
- 8 ports drop cable entry capacity.



Can hold up to 16 subscribers. It is used as a termination point for the feeder cable to connect with drop cable in FTTx network system. It integrates fiber splicing, splitting, distribution, storage and cable connection in one solid protection box.

- IP-66 protection level.
- Integrated with splice cassette and cable management rods.
- Easy maintainance and acces to extend the capacity.
- Fiber bend radius: more than 40 mm.
- Suitable for the fusion splice or mechanical splice.
- Optional: 1*8 Splitter.
- Efficient cable management.
- 16 ports drop cable entry capacity.



Can hold up to 16 subscribers. It is used as a termination point for the feeder cable to connect with drop cable in FTTx network system. It integrates fiber splicing, splitting, distribution, storage and cable connection in one solid protection box.

- IP-66 protection level.
- Integrated with splice cassette and cable management rods.
- Easy maintainance and acces to extend the capacity.
- Fiber bend radius: more than 40 mm.
- Suitable for the fusion splice or mechanical splice.
- Optional: 1*8 Splitter.
- Efficient cable management.
- 16 ports drop cable entry capacity.

QTK-FAT-0416L ACCESS TERMINAL BOX 16 CORES-OUTDOOR

QUALTEK



Can hold up to 16 subscribers. It is used as a termination point for the feeder cable to connect with drop cable in FTTx network system. It integrates fiber splicing, splitting, distribution, storage and cable connection in one solid protection box.

- IP-66 protection level.
- Integrated with splice cassette and cable management rods.
- Easy maintenance and access to extend the capacity.
- Fiber bend radius: more than 40 mm.
- Suitable for the fusion splice or mechanical splice.
- Optional: LGX 1*8 or 1*16 splitter.
- Efficient cable management.
- 16 ports drop cable entry capacity.

QTK-1037 FUSION SPICE PROTECTOR

QUALTEK



Designed for fiber optic splice protection. Provides mechanical reinforcement at the joint point and maintains the optic transmission properties of the fiber optic cable.

- Heat shrinkable polyolefin tubing system.
- Stainless steel rod for mechanical protection.
- Hot fusion insert for sealing.
- Working temperature: - 45°C~110°C.
- Standard Color: transparent (other colors available).



Can hold up to 1 subscriber. It is used as a termination point for the drop cable to connect with patch cable in FTTH indoor application. It integrates fiber splicing, termination, storage and cable connection in one solid protection box.

- Dust- proof design with IP-45 protection level.
- Integrated with splice cassette and cable management rods.
- Manage fibers in a reasonable fiber radius condition. Easy to maintain.
- Suitable for the fusion splice or mechanical splice.
- Embedded type surface, easy for installation and removal.
- 1 port cable entrance for patch cable.



Can hold up to 2 subscribers. It is used as a termination point for the drop cable to connect with patch cable in FTTH indoor application. It integrates fiber splicing, termination, storage and cable connection in one solid protection box.

- Dust- proof design with IP-45 protection level.
- Integrated with splice cassette and cable management rods.
- Manage fibers in a reasonable fiber radius condition.
- Easy to maintain and extend the capacity.
- Suitable for the fusion splice or mechanical splice.
- Embedded type surface, easy for installation and removal.
- 2 port cable entrance for patch cable.

QTK-FTB-2C FTB SERIES TERMINAL BOX 2 CORES

QUALTEK



Can hold up to 2 subscribers. It is used as a termination point for the drop cable to connect with patch cable in FTTH indoor application. It integrates fiber splicing, termination, storage and cable connection in one solid protection box.

- Dust- proof design with IP-45 protection level.
- Integrated with splice cassette and cable management rods.
- Manage fibers in a reasonable fiber radius condition.
- Easy to maintain and extend the capacity.
- Suitable for the fusion splice or mechanical splice.
- Embedded type surface, easy for installation and removal.
- 2 port cable entrance for patch cable.

QTK-FTB-4A FTB SERIES TERMINAL BOX 4-8 CORES

QUALTEK



Can hold up to 4 or 8 subscribers. It is used as a termination point for the drop cable to connect with patch cable in FTTH indoor application. It integrates fiber splicing, terminations, storage and cable connection in one protection box.

- Dust- proof design with IP-45 protection level.
- Integrated with splice cassette and cable management rods.
- Manage fibers in a reasonable fiber radius condition.
- Easy to maintain and extend the capacity.
- Suitable for the fusion splice or mechanic splice.
- Embedded type surface, easy for installation and removal.
- 4~8 port cable entrance for patch cable.

POLE HARDWARE

QTK-KIT-A ADSS ANCHOR FITTINGS KIT

QUALTEK

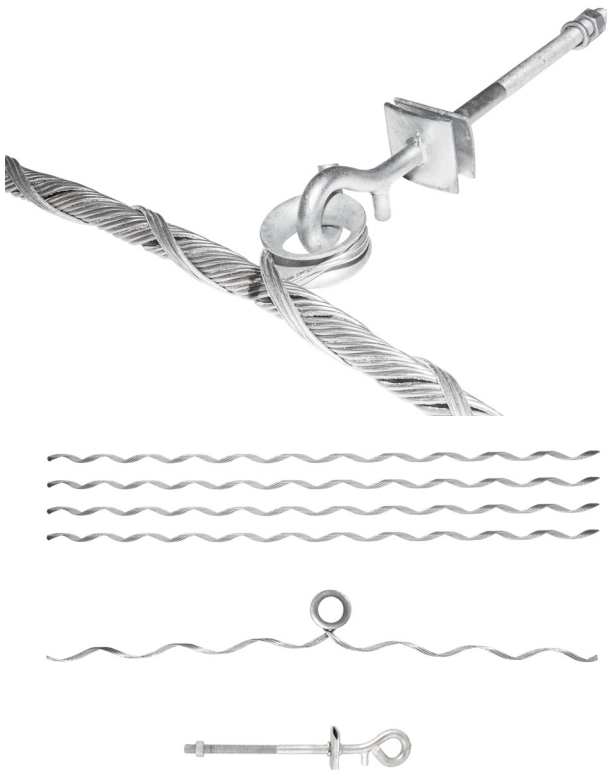


Preformed wire and fittings for anchoring of ADSS cablet

- Hot dip galvanized fittings.
- Armor rods provide protection and cushioning to ADSS cables.
- The special design of preformed rods ensures that clamps do not cause undue stress to the ADSS cables, guaranteeing the normal lifetime of cable systems.

QTK-KIT-S ADSS SUSPENSION FITTINGS KIT

QUALTEK



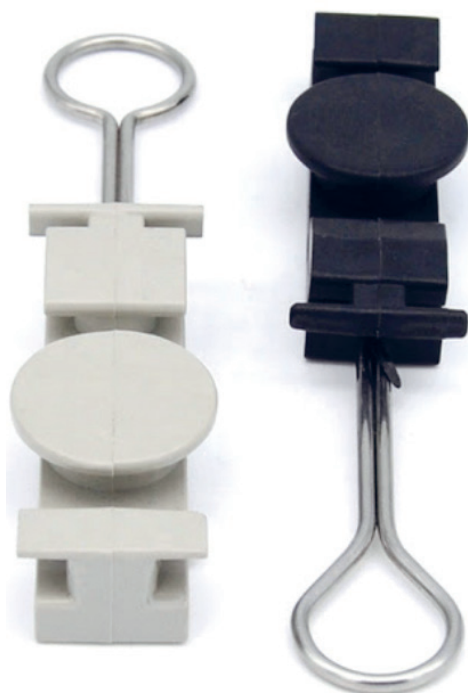
Preformed wire and fittings for suspension of ADSS cable

- Hot dip galvanized fittings.
- Armor rods provide protection and cushioning to the ADSS cables.
- The special design of preformed rods ensures that clamps do not cause undue stress to the ADSS cables, guaranteeing the normal lifetime of cable systems.



Corner attachment clamps are used for angles of 35 degrees to 60 degrees.

- Accommodates 5/8-inch diameter pole mounting bolt.
- The inner pole mounting surface is curved with integral spurs for contact stability with the pole.
- The integral thimble eyes will accept deadending devices up to 1/2-inch diameter.
- Ductile Iron - Hot Dip Galvanized.



Designed to anchor and support flat or round fiber optical cable on dead-end routes during outdoor FTTH network constructions.

- Good insulation property.
- High mechanical strength.
- Easy installation without tools.
- Durable UV resistant thermoplastic and stainless steel material.
- Excellent environmental stability.

QTK-D2 DROP WIRE CLAMP B TYPE

QUALTEK

Designed to anchor and support flat or round fiber optical cable on dead-end or intermediate routes during outdoor FTTH network constructions.



which is applied with short span

- Span: up to 50m.
- Unique S hook and Self-adjusting wedge design.
- Easy cable slack adjustment to apply with proper tension.
- Durability: Dielectric UV resistant thermoplastic and galvanized steel.
- Excellent environmental stability.
- Cable Size
 - Flat cable: 2~3mm
 - Round cable: 2~5 mm

QTK-ACC DROP WIRE CLAMP Q TYPE

QUALTEK

Consists of a round body and an open loop that allows the cable to be securely clamped into its body, without tools. The open loop can help this clamp attach drop cables on pole brackets, wall angles and SS hooks easily. Is intended for suspension round fiber optical cable on dead-end or intermediate routes during FTTH network constructions.



- Easy, convenient and removable installation.
- Anti-drop wire bail design.
- Durability: Full dielectric UV resistant thermoplastic.
- Excellent environmental stability.
- For round cable size 2mm to 6mm.
- Breaking Load: 1 MBL.t



304 OR 316 STAINLES STEEL BANDING STRAPPING AND BUCKLES

304SS Band Width : 12.7mm(1/2"), 15.9mm(5/8"), 19mm(3/4") X Band Thickness : 0.4mm or 0.7mm.

316SS Band Width : 12.7mm(1/2"), 15.9mm(5/8"), 19mm(3/4") X Band Thickness : 0.5mm.



MICRODUCTS



The outer sheath is rugged High Density Poly Ethylene HDPE providing excellent protection™ from the physical environment. An Aluminum layer is added to provide additional strength.

- Silicone coated ducts.
- Water blocking tape available.
- Aluminum or fabric installed.
- Two layer of sheath.
- Available tracer wire, ripcords installed.



Surrounded by a layer of moisture-barrier metallic or non-metallic tape and a flexible sheath of black HDPE. DI ducts can be installed in pre-existing pipes or sub-ducts.

- Silicone coated ducts.
- Available water blocking tape.
- Aluminum or fabric installed.
- Two layer of sheath.
- Available tracer wire, ripcords installed.



The Thick Walled Microduct is designed for direct burial. Its superior blowing characteristics and sufficient thickness of the sub duct walls often results in no additional protective ducts required. Thick walled microducts can be branched off easily and the primary tube can be directly buried as a single microduct.

- Silicone coated ducts.
- Available Water Blocking tape.
- Aluminum or fabric installed.
- Two layer of sheath.
- aailable tracer wire, ripcords installed.

QUALTEK

ventas@goqualtek.com
www.goqualtek.com

QUALTECH INC.
1.305.307.0745
12350 SW 132 Ct. Suite 204.
Miami, FL 33186